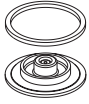


Accessori e ricambi Spare parts

Gruppo membrana completo Diaphragm complete

NEW



CODICE-CODE	PROD.	VERSION
C39.00.00074	R - FR	RELIEVING
C39.00.00075	R - FR	NON RELIEVING
C39.00.00076	R - FR	FA-RM

Cupola spia completa Oil window



CODICE-CODE	PROD.
C42.03.00005	L

Molla regolazione Regulation spring

NEW



CODICE-CODE	PROD.	SET REGULATION
A38.00.00131	MR - R - FR	0÷4 Bar
A38.00.00130	MR - R - FR	0÷8 Bar
A38.00.00129	MR - R - FR	0÷10 Bar
A38.00.00128	MR - R - FR	0÷12 Bar

Tappo olio con OR 2031 Oil plug with OR 2031



CODICE-CODE	PROD.
C75.03.00073	L

Tazza completa per filtro Bowl for filter



CODICE-CODE	PROD.	VERSION
C40.02.00062	F - FR - MF	TT SS
C40.02.00108	F - FR - MF	PE SS
C40.02.00036	F - FR - MF	TC SS

Scarico automatico Automatic drain



CODICE-CODE	PRODUCT
C40.02.00130 SA	F - FR - MF
C42.02.00012 SAD	F - FR - MF

Tazza con scarico automatico Bowl with automatic drain



C40.02.00133	F - FR - MF	TT SA
C40.02.00134	F - FR - MF	PE SA
C42.02.00017	F - FR - MF	TT SAD
C42.02.00014	F - FR - MF	PE SAD

Kit montaggio scarico automatico Mounting kit for automatic drain



CODICE-CODE	PRODUCT
C40.02.00131	SA - SAD

Tazza completa per lubrificatore Bowl for lubricator



CODICE-CODE	PROD.	VERSION
C40.03.00082	L	TT
C40.03.00084	L	PE
C40.03.01016	VL	TT
C40.03.01017	VL	PE
C40.03.00047	L	TC

Manometro Gauge



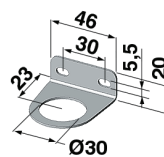
CODICE-CODE	Bar	Psi	A	B	CH.
A38.00.00026	0÷12	0÷175	40	G1/8"	14
A38.00.00055	0÷6	0÷85	40	G1/8"	12
A38.00.00104	0÷2,5	0÷36	40	G1/8"	12

Gruppo filtraggio Filtering element



CODICE-CODE	PROD.	VERSION
C40.02.00101	F	20 MICRON
C42.04.00001	FR	20 MICRON
C40.02.00106	F	5 MICRON
C42.04.00005	FR	5 MICRON
C40.02.00053	MF	0,01 MICRON
A42.02.00009	CF	CARBON

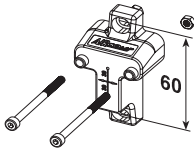
Staffa fissaggio a parete Bracket



CODICE-CODE
C38.00.00069

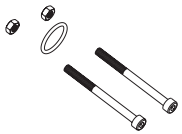
Accessori e ricambi Spare parts

Kit staffa di fissaggio a "T" "T" bracket kit


CODICE-CODE

C42.05.00001

Kit per assemblaggio unità Kit assembling units


CODICE-CODE PRODUCT

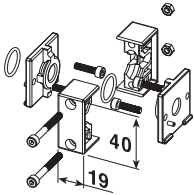
C40.05.00001 F+R+L - V3+FR+L

C40.06.00001 FR+L

C40.07.00001 F+L - F+MF

--

Kit per assemblaggio batterie Battery assembling kit


CODICE-CODE

C42.06.00001

--

Grano Plug

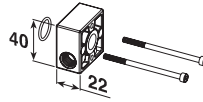

CODICE-CODE CONNECTION

B38.00.00018 G1/8"

A42.01.00010 G1/4" (air takeoff)

--

Presa d'aria intermedia per unità Air take-off for units


CODICE-CODE CONNECTION PRODUCT

C40.05.00108 1/4" F+R+L - FR+L

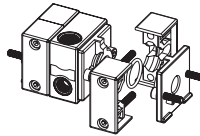
V3+FR+L - F+L - F+MF

C40.05.00103 2 WAYS (1/4"-1/8") F+R+L - FR+L

V3+FR+L - F+L - F+MF

--

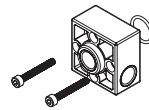
Presa d'aria intermedia per batterie Battery air take-off


CODICE-CODE CONNECTIONS

C42.05.00003 n°1 G1/4" - n°2 G1/8"

--

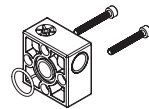
Presa d'aria ingresso Inlet air take-off


CODICE-CODE CONNECTIONS

C42.06.00002 G1/4" - G1/4"

--

Presa d'aria uscita Outlet air take-off


CODICE-CODE CONNECTIONS

C42.06.00003 G1/4" - G1/4"

--

Pressostato Pressure switch


CODICE-CODE REF.

A50.06.00005 AP1 - 3-02-03-G

--

Per maggiori informazioni relative al pressostato ed alle prese d'aria con pressostato vedi pag. 113
For further information about pressure switch or air take-off with pressure switch, please see page 113